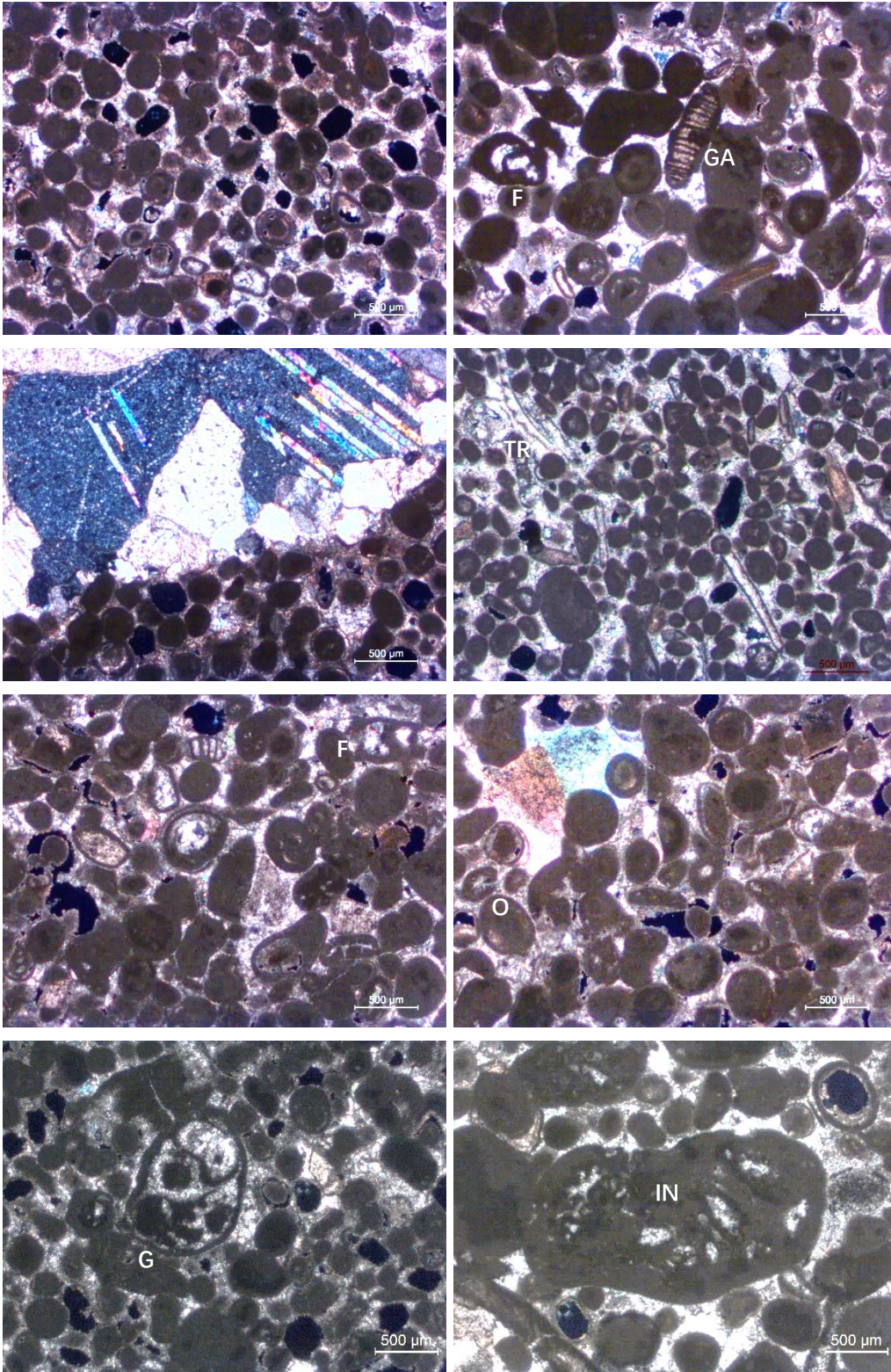


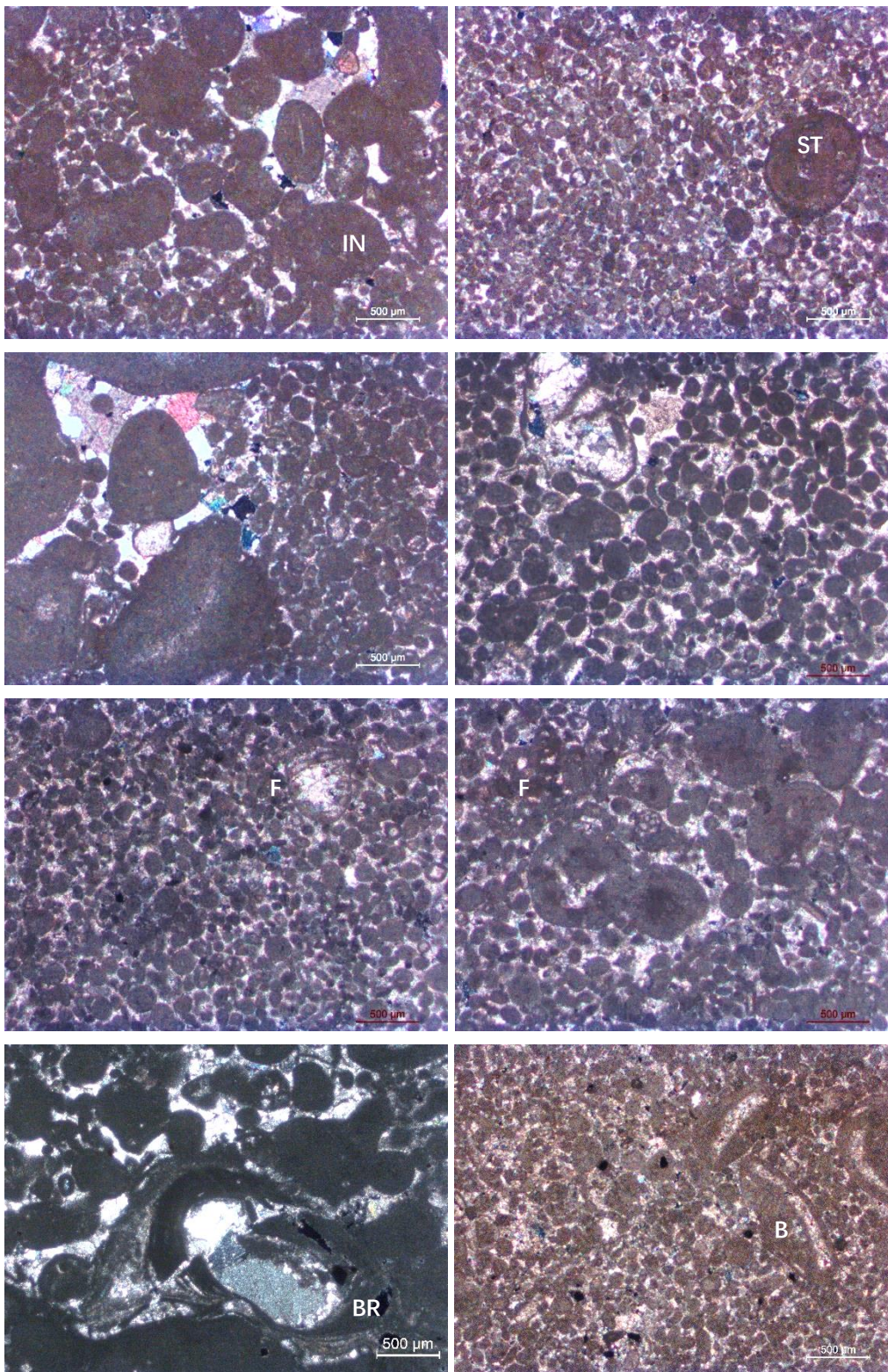
**Supplementary Materials: Optical Microscope Graphs of Thin Sections**

Pidiogo quarry



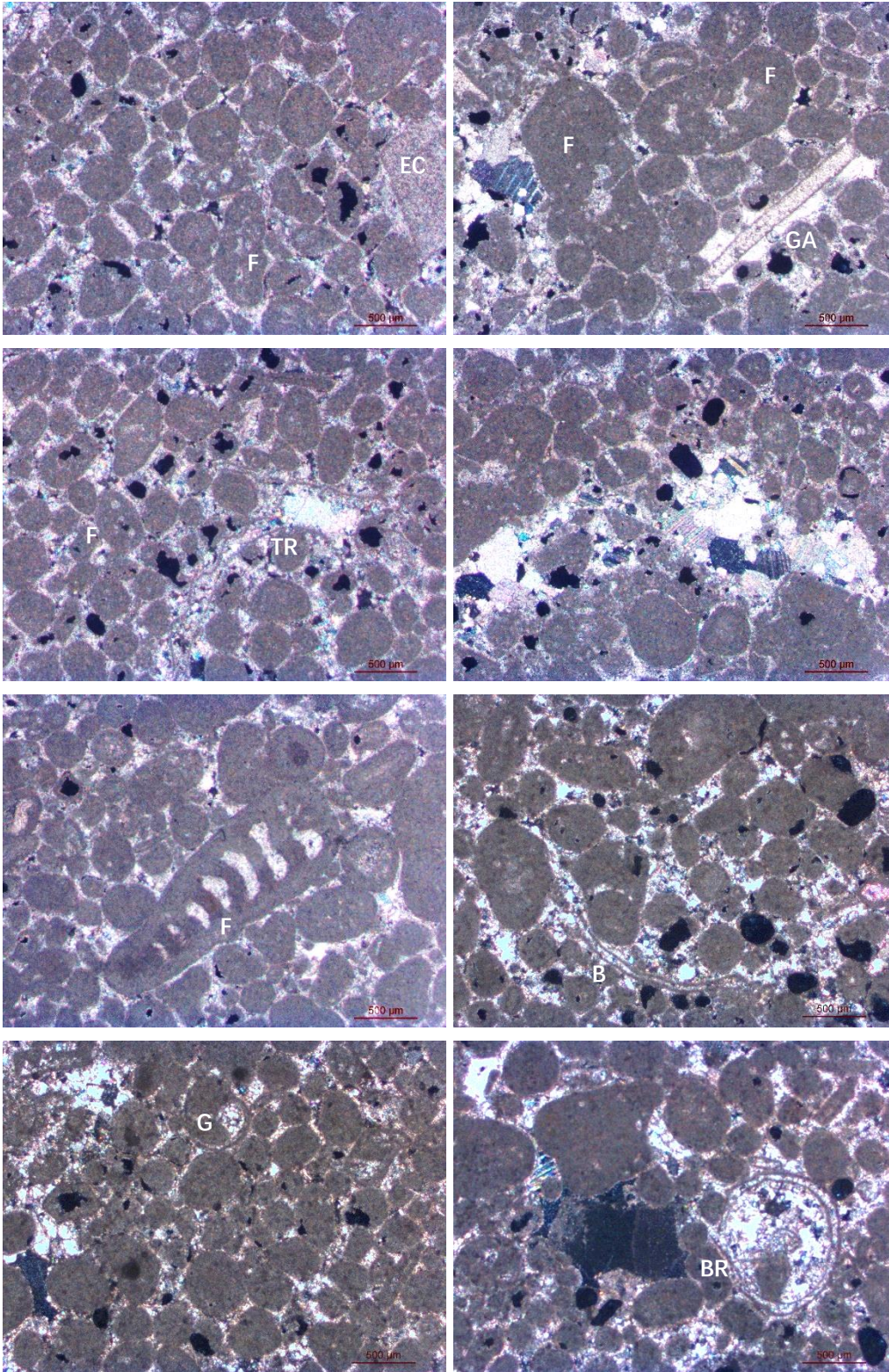
GA=Gymnocodiacean algae, TR=Trilobite, F=Foraminifera, G=Gastrocod, O=Ostracod, IN=Intraclast

Valinho do Rei quarry



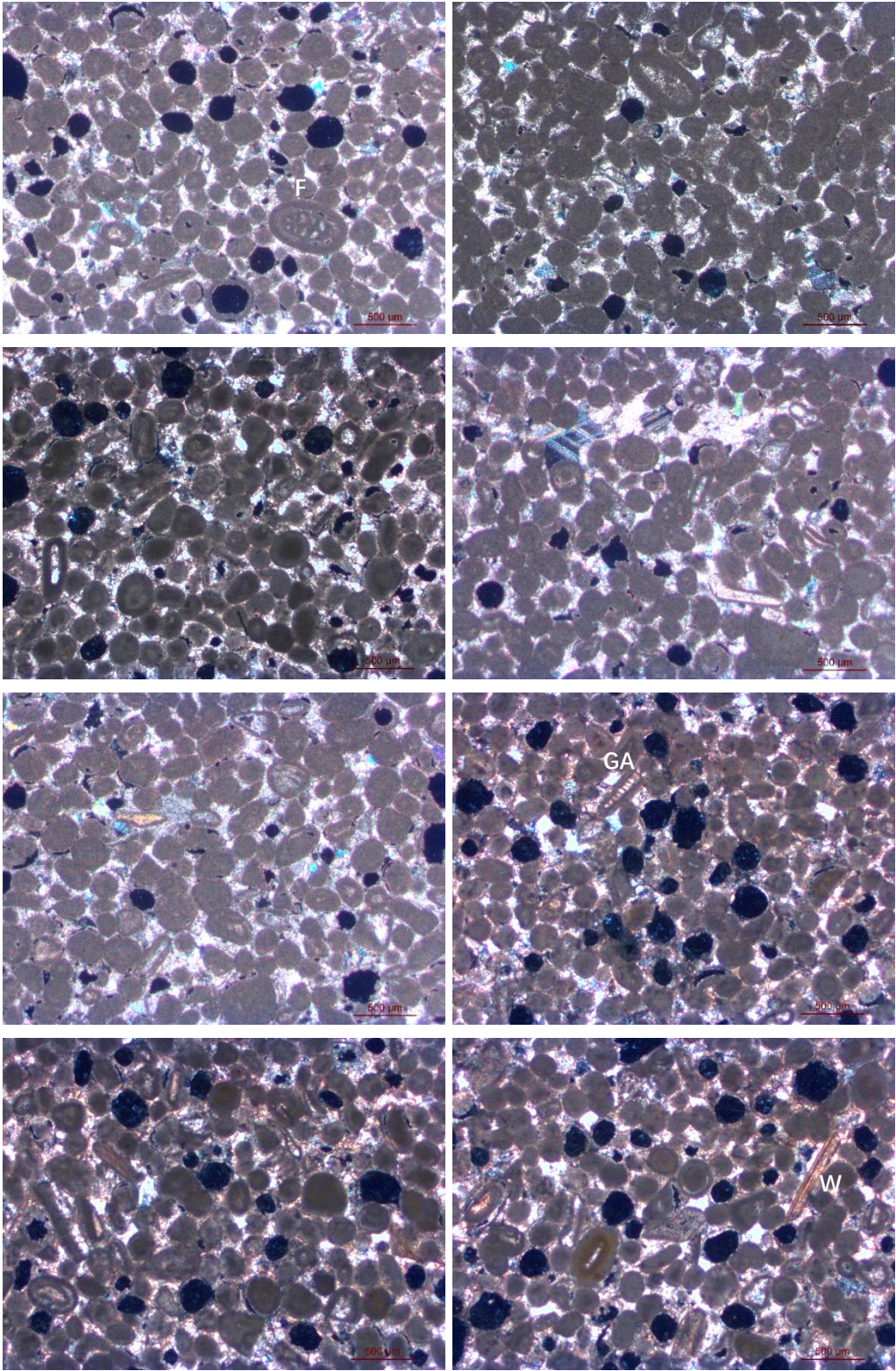
F=Foraminifera (trocholina, kurnubia, miliolina), IN=Intraclast, BR=Brachiopod, ST=Styliolinid, B=Bivalve

Reguengo do Fetal quarry



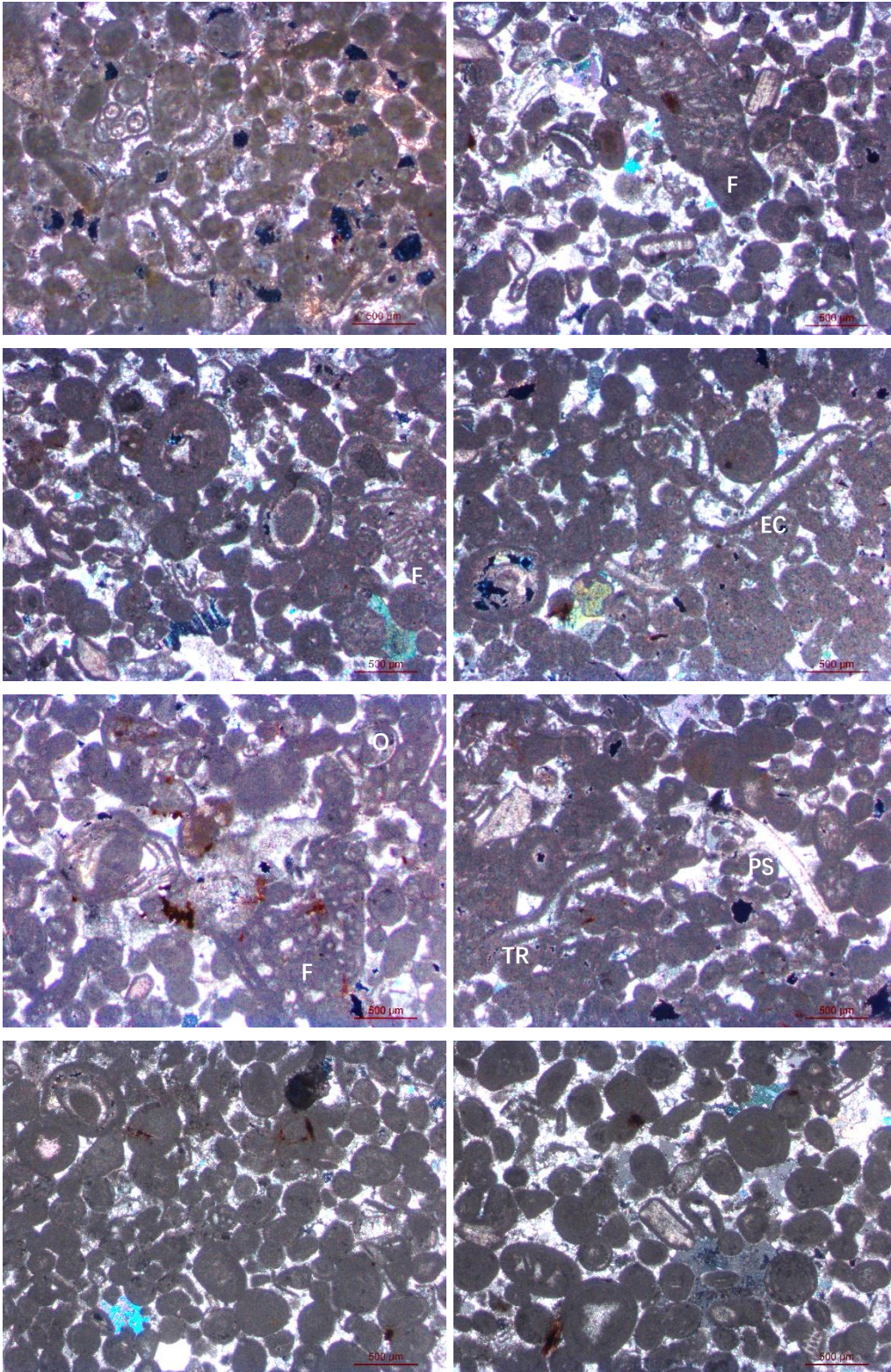
F=Foraminifera (miliolid, alveospta, haddonina), TR=Trilobite, EC=Echinoderms, G=Gastropod, BR=Brachiopod

Cabeço do Roxo quarry



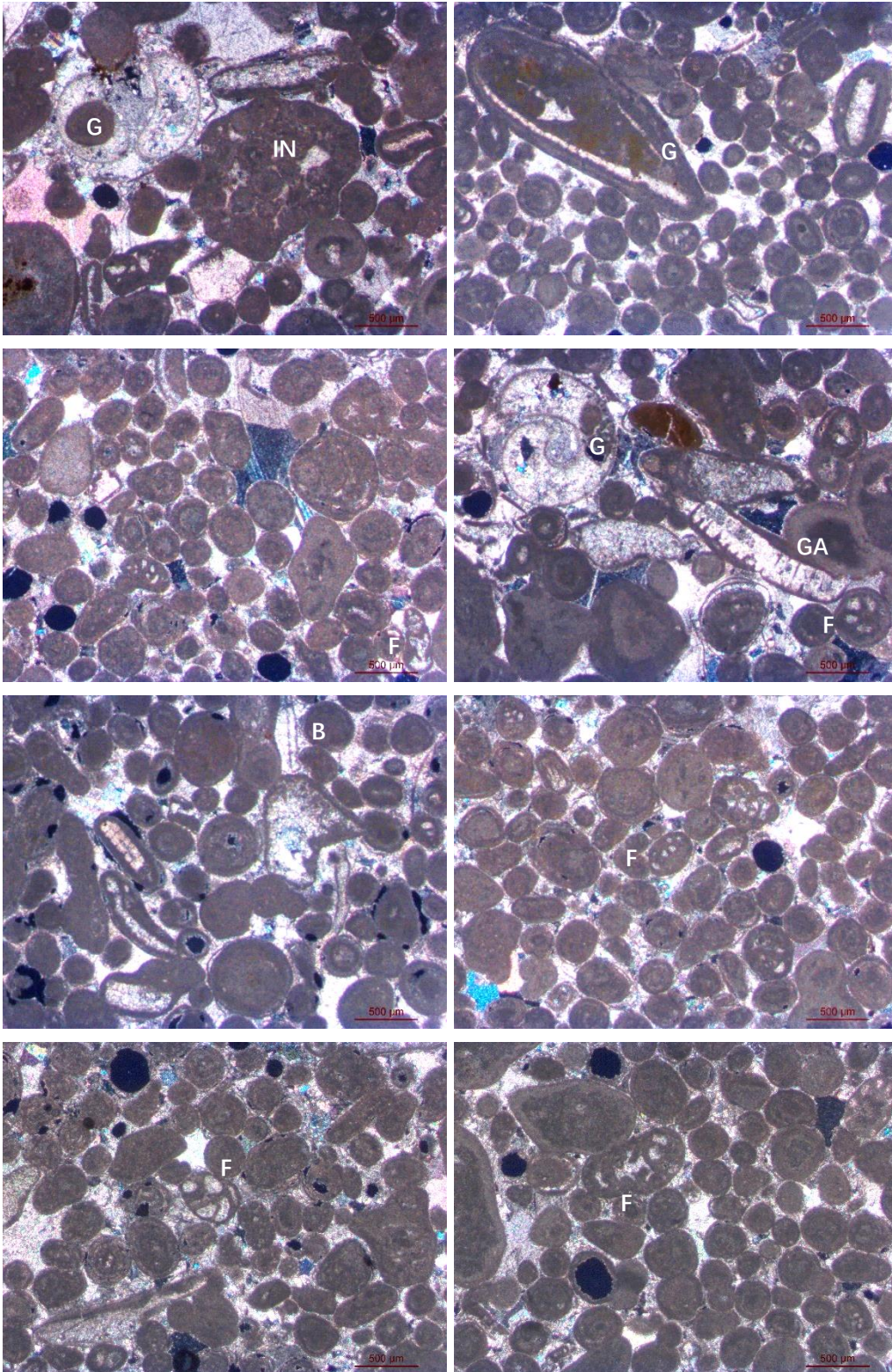
W=Wood, GA=Gymnocodiacean algae, F=Foraminifera

Outreiro de Sebastião



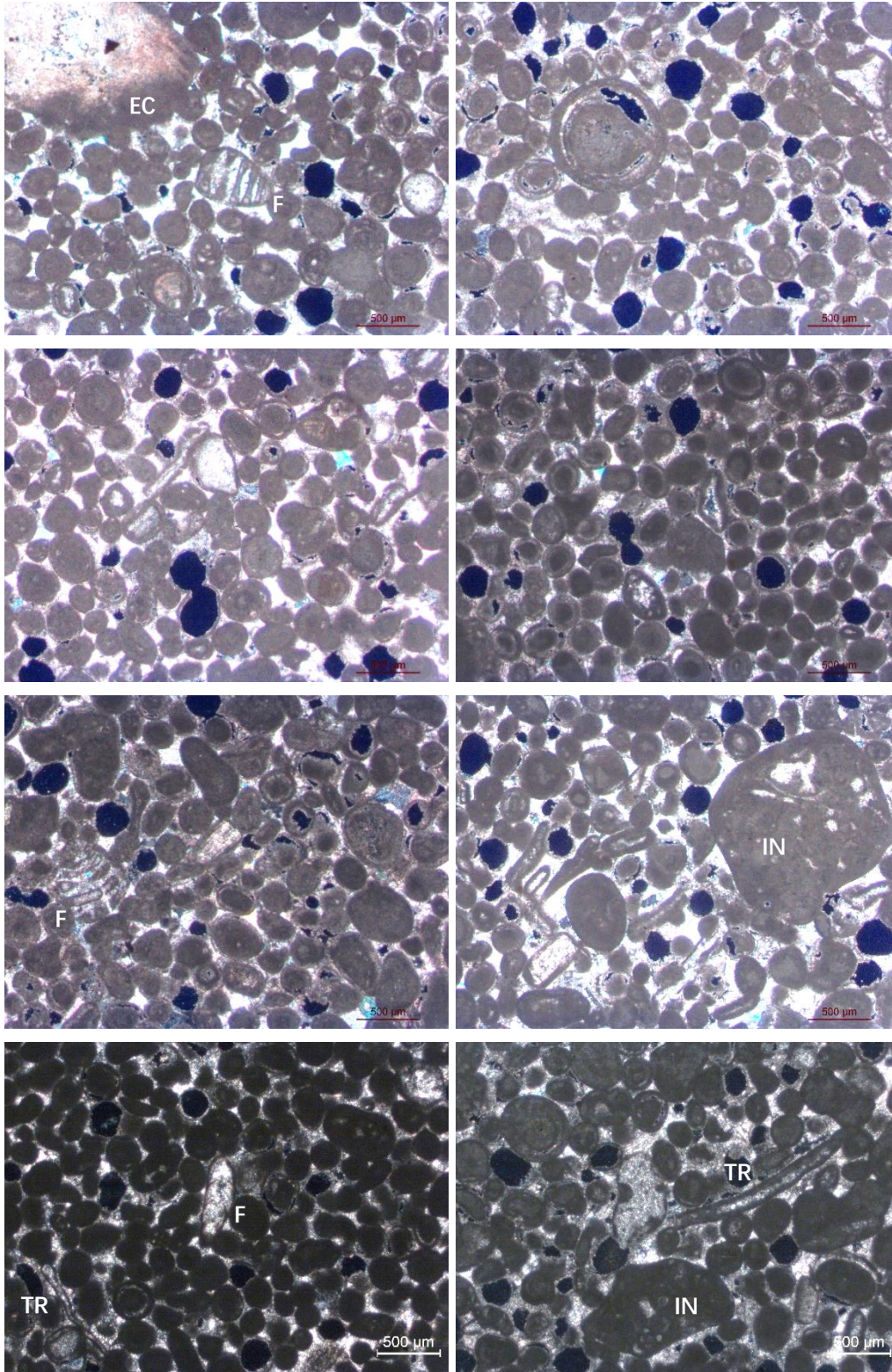
PS=Pseudodonezella, O=Ostracod, EC=Echinoderm, F=Foraminifera (kurnubia), TR=Trilobite

Batalha Monastery, royal cloister west gallery



G=Gastropod, GA=Gymnocodiacean algae, B=Bivalve, F=Foraminifera (milioid), IN=Intraclast

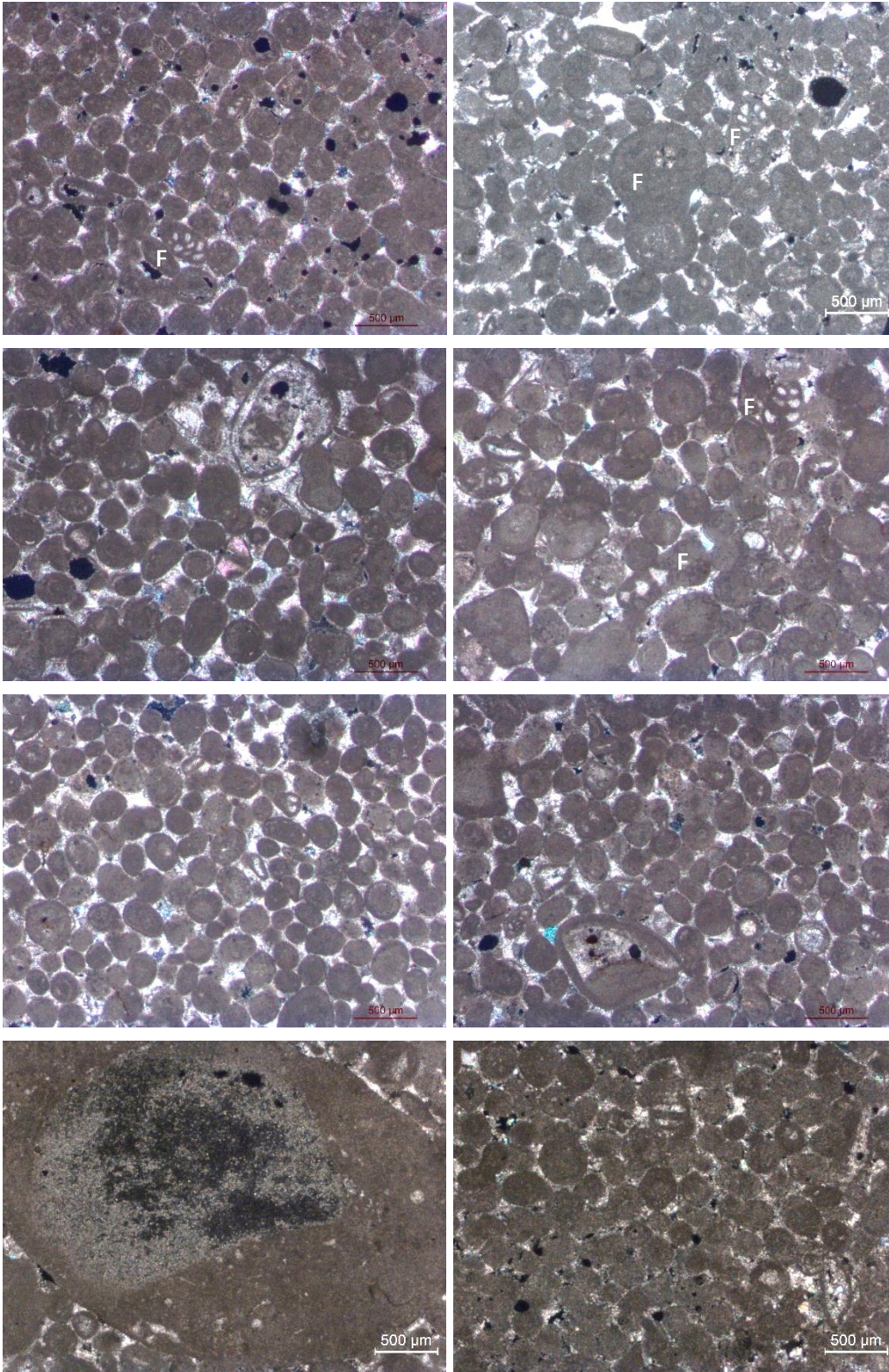
Batalha Monastery, north aisle eaves arch



F=Foraminifera (trocholina alpina, miliolina), EC=Echinoderms, IN=Intraclast, TR=Trilobite

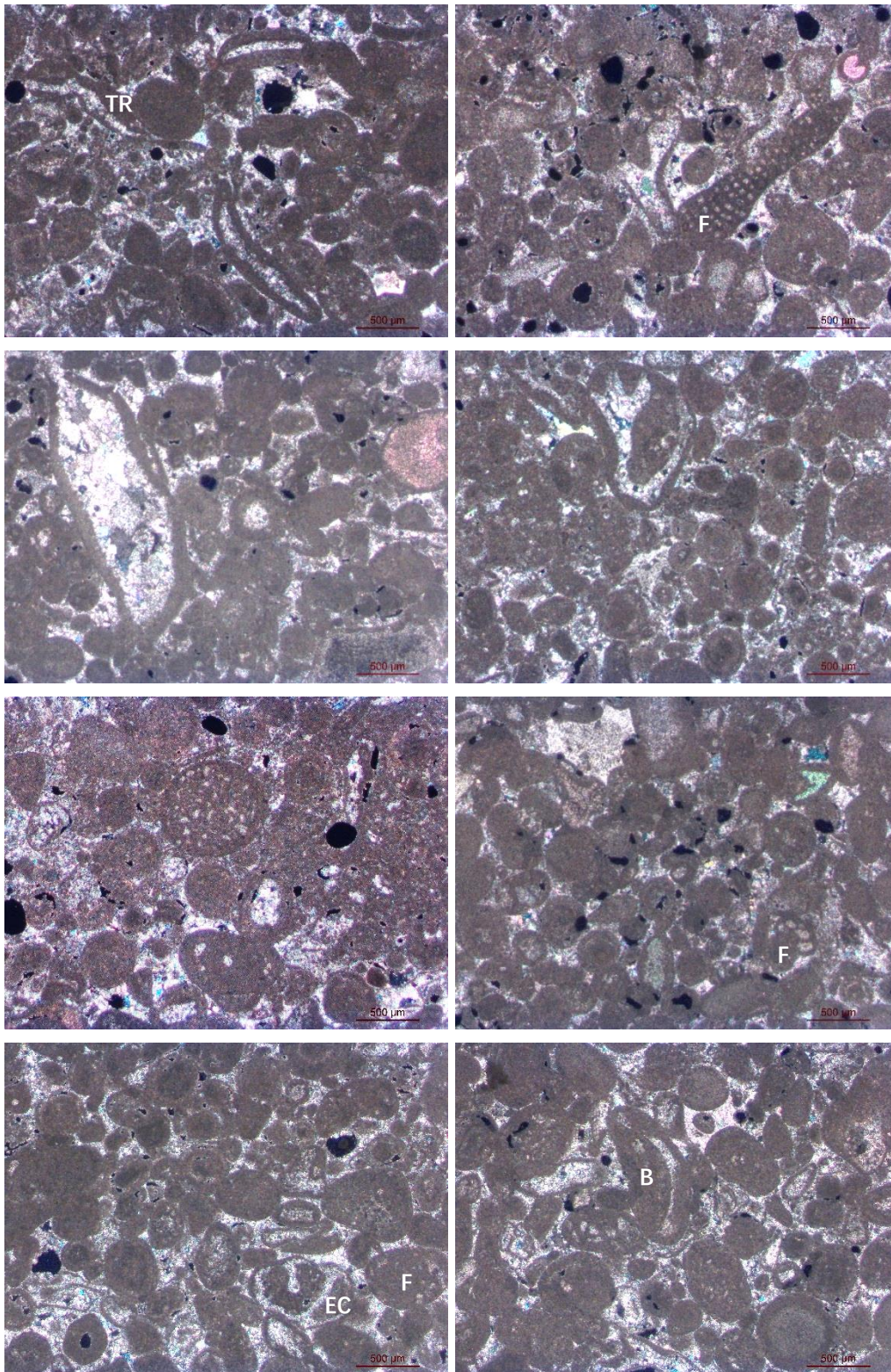


Batalha Monastery, roof top



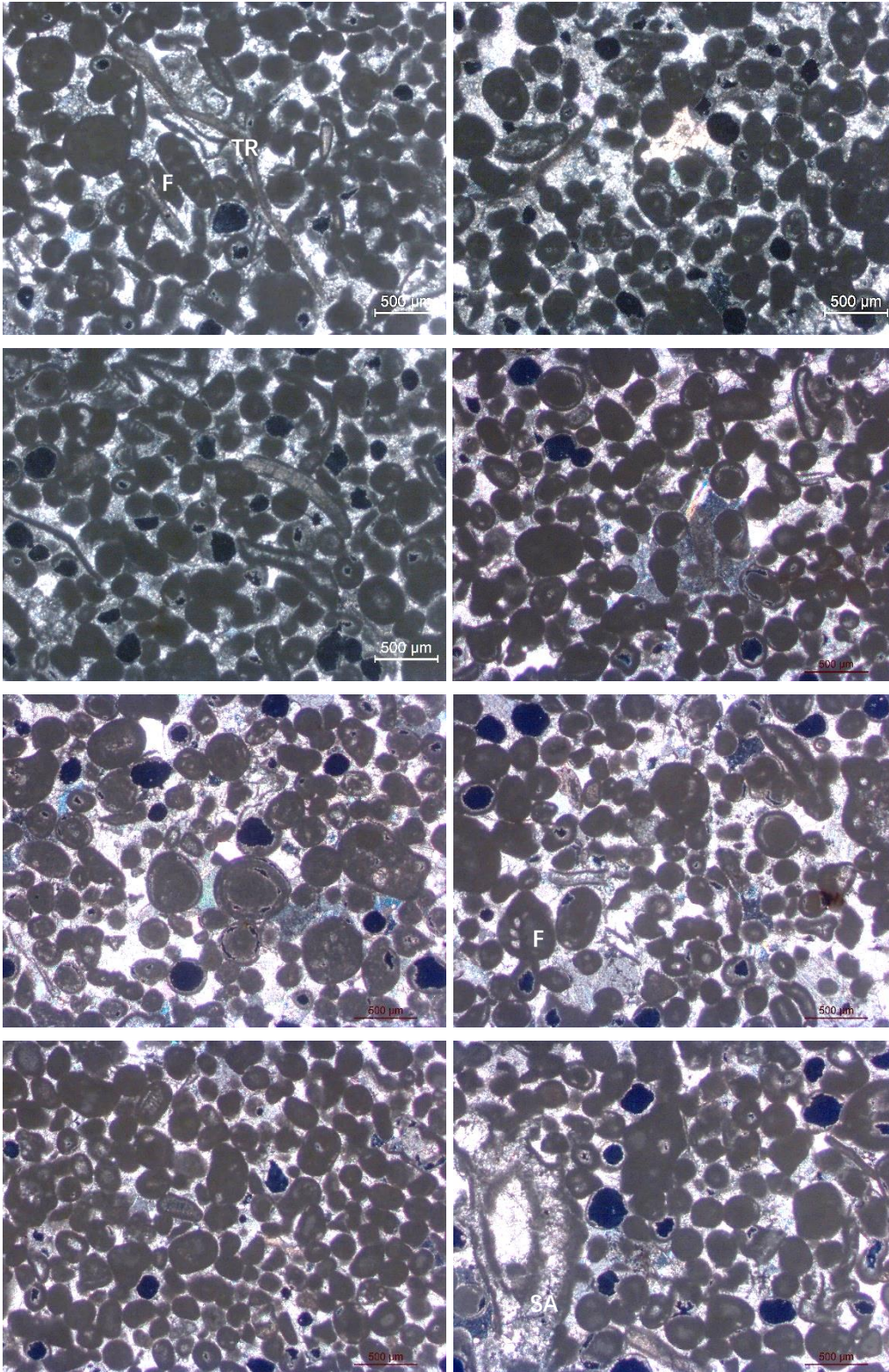
F=Foraminifera

Batalha Monastery, church railing 1



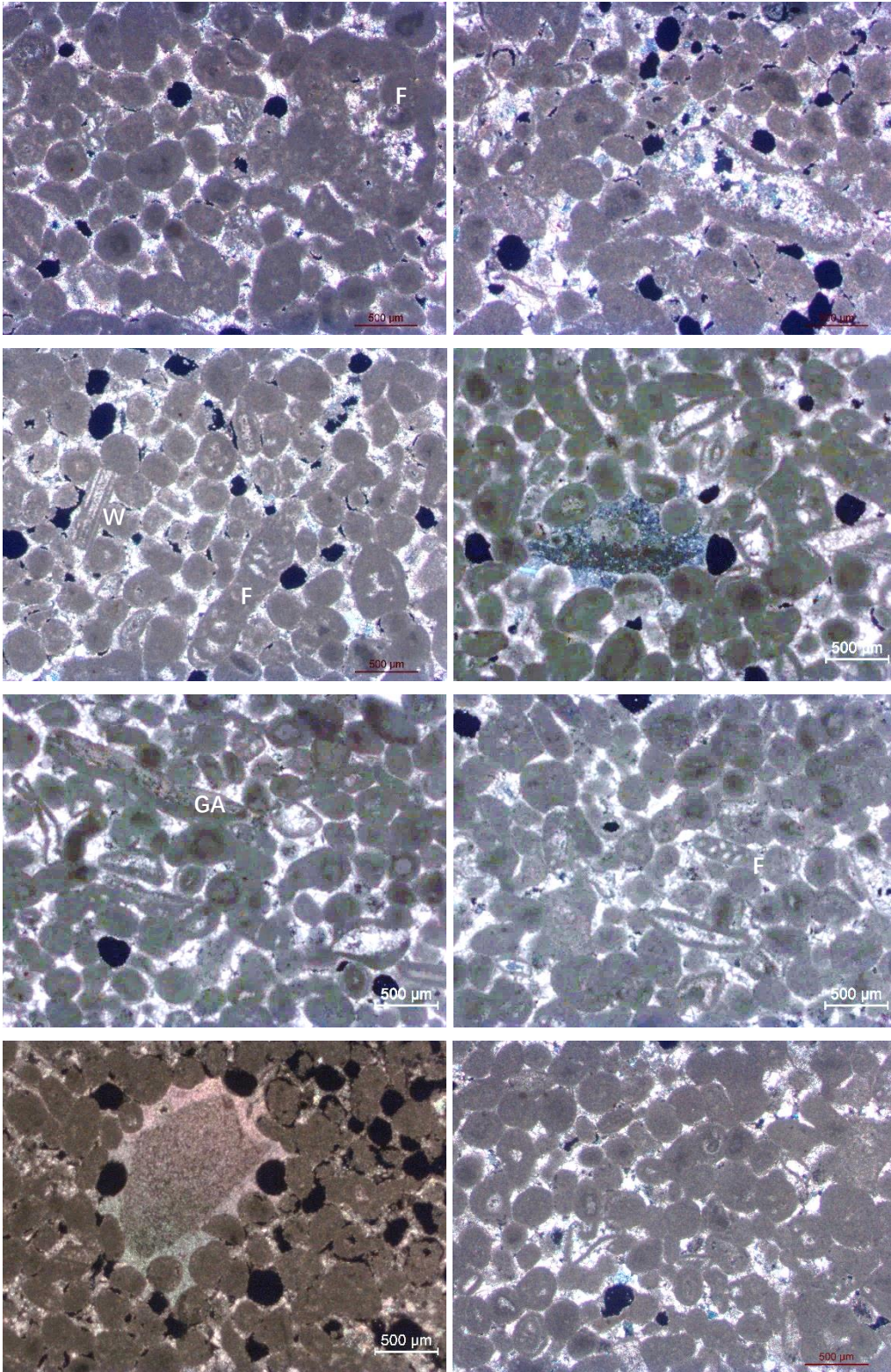
EC=Echinoderm, Gymnocodiacean algae, F=foraminifera (lepidorbitoides), B=Bivalve, TR=Trilobite

Batalha Monastery, church railing 2



SA=Salpingoporella istriana, F=Foraminifera, TR=Trilobite

Batalha Monastery, baluster



W=Wood, GA=Gymnocodiacean algae, F=Foraminifera